



FLIGHT OPERATION CARD

PELLISSIER HELIPAD "Sauze D'Oulx"

CARD N°
MO-002

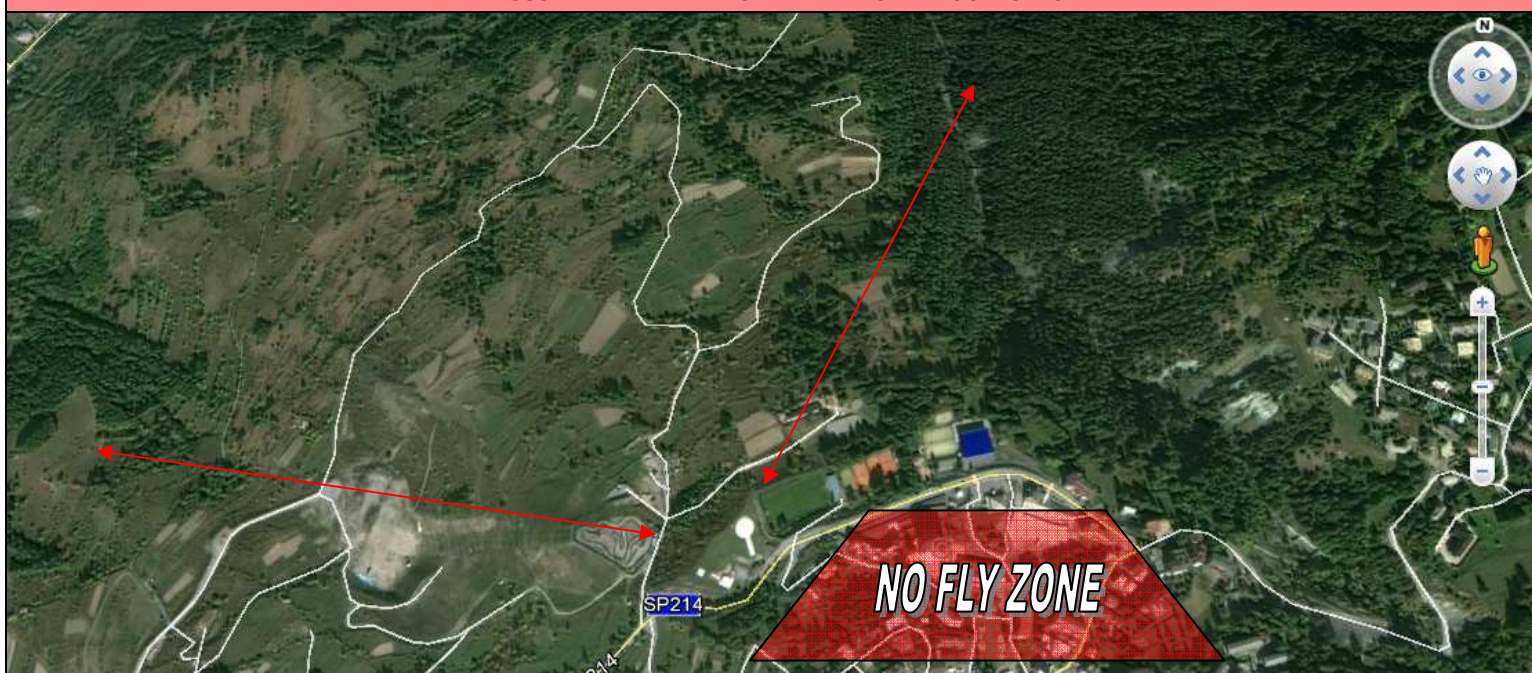
HELIPAD NAME: "Sauze d'Oulx"				NAVIGATION INFO			
LOCATION: Viale Genevris – Sauze D'Oulx (TO)				FREQUENCIES: TORINO INFO: 119,95 MILANO INFO: 124,92			
FREQUENCIES: PH-01: 130, 00 136,19170				RADIO AIDS FREQ: CSL VOR/DME: 116,75 (RAD 242° - 36 NM) AOSTA IAOS DME: 109,75 (RAD 200° - 51 NM) TOP VOR/DME: 114,50 (RAD 271° - 42NM)			
ELEVATION: 4195 ft / 1460 m							
CONGESTED AREA	HOSTILE	DAY	NIGHT	HELIPAD COORDINATES:		LATITUDE	LONGITUDE
YES	NO	YES	NO			N 45° 01' 45"	E 006° 51' 17"

TAKE OFF AND LANDING DISTANCES								
TAKE OFF				LANDING				
SLOPE	TORA	TODA	DIRECTION		DIRECTION	LDA	LRA	SLOPE
N/A	N/A	N/A	090°-110°	EAST APP / TKF (FORBIDDEN)	090°-110°	N/A	N/A	N/A
15°	10 mt.	50 mt.	265°-285°	WEST APP / TKF	265°-285°	50 mt.	10 mt.	15°

HELIPAD GENERAL INFORMATIONS		
ADDRESS:	Viale Genevris – 10050 Sauze D'Oulx (TO)	
CONTACTS:	Pellissier Helicopter srl	
PHONE NUMBERS:	OFFICE	HANGAR
	0165-903786	0039 012276346
HELIPAD:	Asphalt and concrete with light system; H writing in Yellow	
LENGHT	WIDTH	TOUCH DOWN ZONE
28 mt.	28 mt.	Ø28 mt.
TECHNICAL SUPPORT:	YES	
FUEL AVAILABLE:	JET "A1"	
FIRE FIGHTING SERVICE:	YES	
VEHICLE ACCES:	YES	
PHONE/FAX:	YES	
HELICOPTER HANGAR:	YES	

PHOTO	
PHOTO DATA:	22/12/2014

RACCOMENDED LANDING AND TAKE OFF PROCEDURES





FLIGHT OPERATION CARD

PELLISSIER HELIPAD "Sauze d'Oulx"

CARD N°
MO-001

LANDING AND TAKE OFF PROCEDURES NOTE

- No approach and take off procedures, different from the one indicated in this card are accepted.
- All the Pilots must avoid the flight over the zones indicated as "NO FLY ZONE" in this card, at an altitude less than 1500 ft. GND.
- For pilots that are not familiar with the landing procedure and the helipad area, is mandatory to overfly the zone at an altitude not less than 1500 ft. GND, prior to commence the landing procedure.
- All the pilots approaching or leaving the helipad area must be aware and pay attention to other helicopters operating in the helipad area.
- All the pilots approaching or leaving the helipad area must be aware and pay attention to the ground movement of helicopters, trucks and personnel in the helipad area.
- Helicopters approaching and leaving from or to the east sector must contact "Torino info" prior to enter in the Torino ATZ zone.
- All the pilots must communicate by phone, at least 2 hours in advance, the intention to land and eventually refuel at "PH-01" helipad.

OBSTACLE GRAPHIC



OBSTACLE INFORMATIONS

Obstacle type	Colour and characteristics	Height from the helipad level
Build	Build	10 m
Revolving Crane		
Power Line		

The present Flight operations card is emitted by the PH Flight operations office and approved by the FHOP. The instructions given by the following paper, does not replace or in any way relieve the pilot from complying with the general rules of the air and/or those provided by current legislation.